



Your Keyboard



Over to the right of the piano, notes get higher and higher. These notes sound light and sparkly - like tiny bells or bird songs



Middle
C

Higher Notes



Lower Notes

On the left hand side of the piano we have the low notes. These are like the voices of elephants. When you play these keys they make deep boomy sounds.

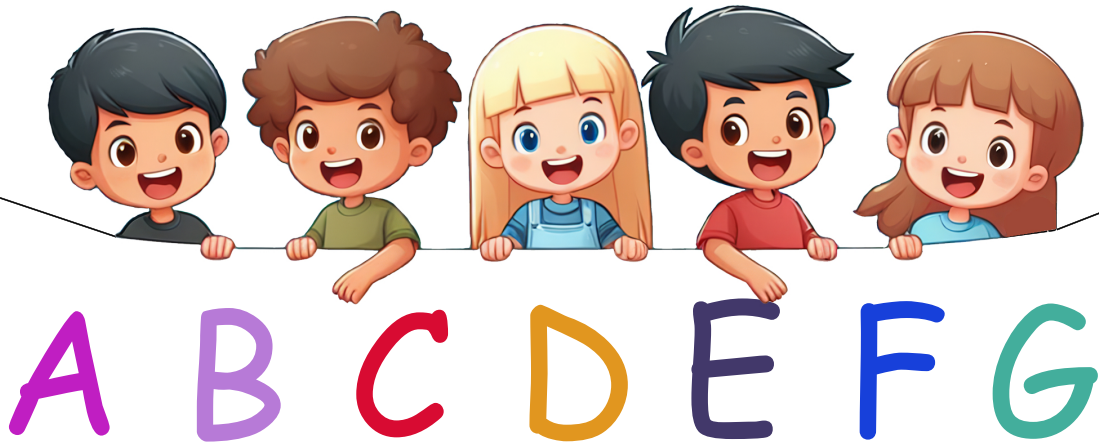
In the middle of the piano, the notes start to sound more like speaking voices. This is where most people sing, and its where you will hear lots of your favourite songs.



The Piano Keyboard

There are BLACK and WHITE keys on the Piano.

The WHITE keys are named below

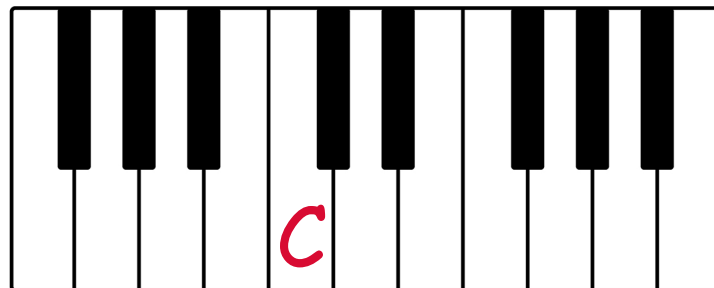


Speak out loud the letters of the musical alphabet

The BLACK KEYS are grouped in TWOS AND THREES.

Touch all the groups of TWO BLACK KEYS on your PIANO

C is found to the LEFT of the TWO BLACK KEYS





This is the TREBLE CLEF sign

Our right hand plays notes on this stave



Right Hand



This is the BASS CLEF sign

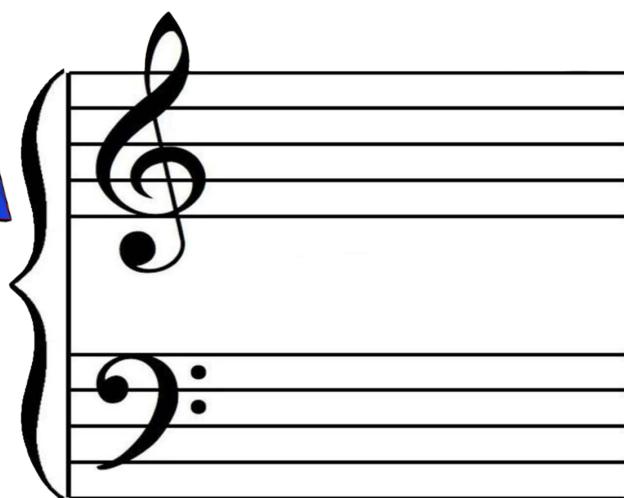
Our left hand plays notes on this stave



Left Hand

The Stave / Staff

BRACE joins the treble and Bass clef together.



This is where the notes live



Fingers are numbered

This helps us play the notes easily



Left Hand



Right Hand